

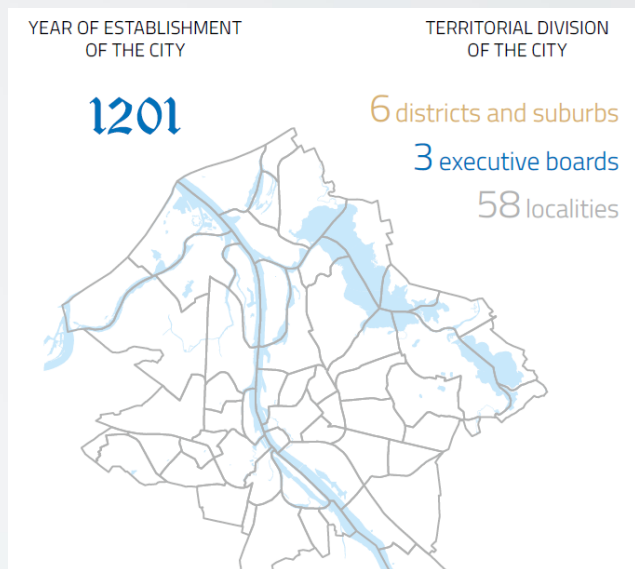
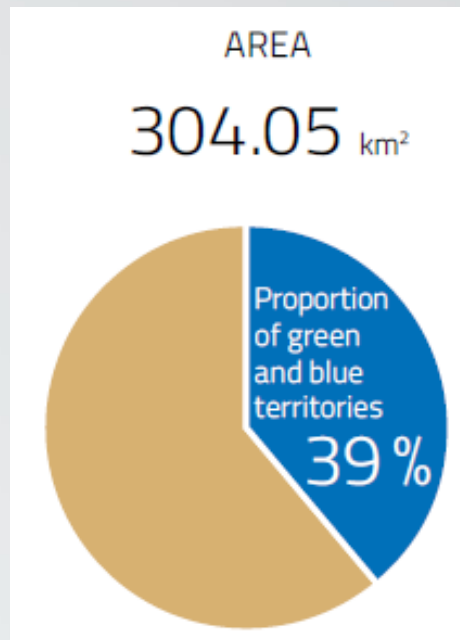
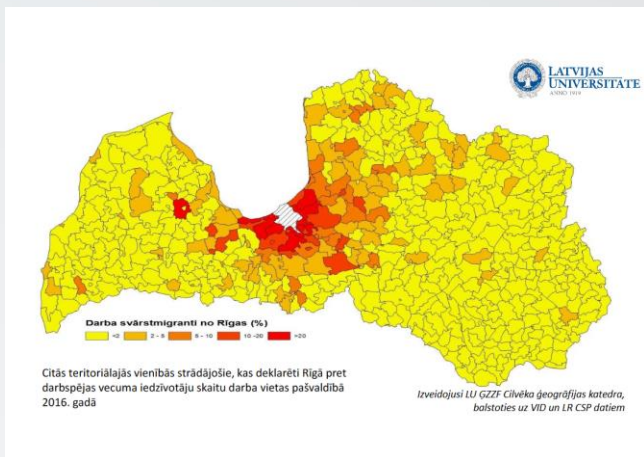


City of Riga

E - Scooters:
potential solutions for
social inclusion

Riga Municipal Agency
«Riga Energy Agency»

Riga: Facts & Figures



Population:

| | |
|---------------------|-----------|
| Riga: | 639 000 |
| Greater Riga: | 1 000 000 |
| Riga Agglomeration: | 1 300 000 |

Economy

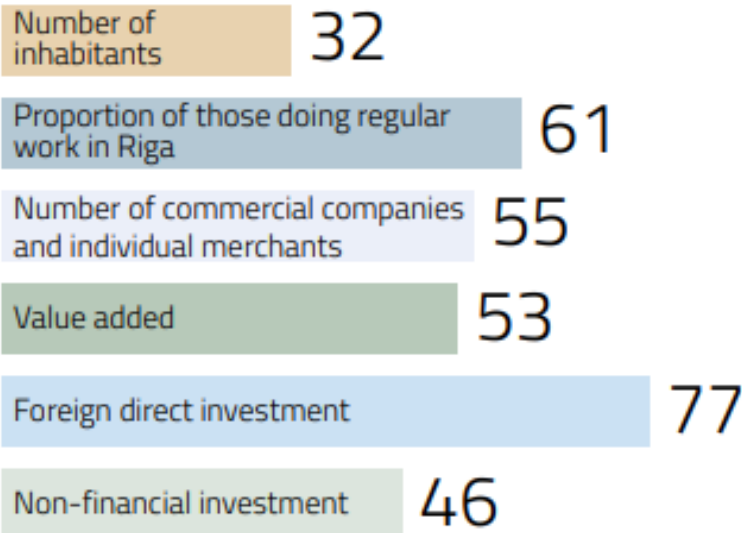
GROSS DOMESTIC PRODUCT

9 671.5 million euro³



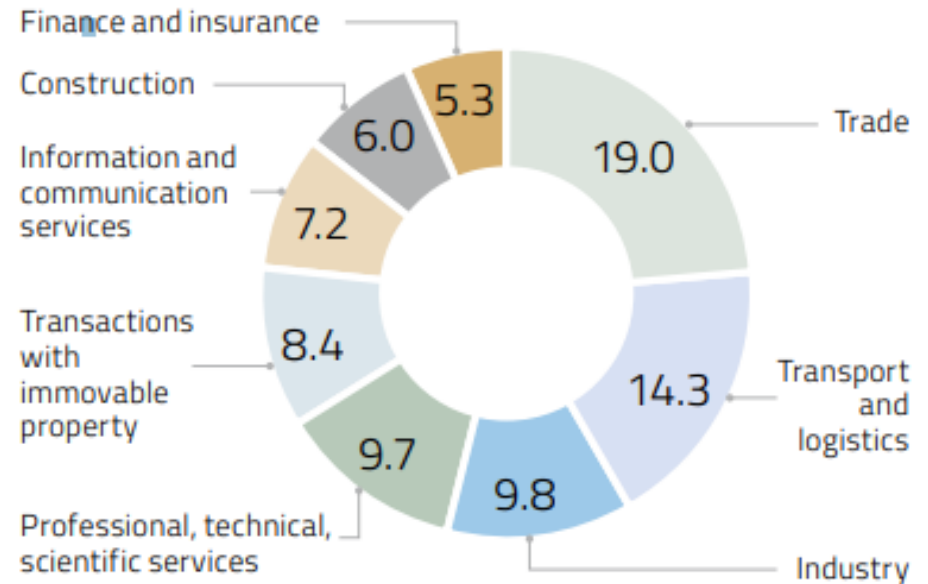
ROLE OF RIGA IN THE LATVIAN ECONOMY

(proportion of the city in the total volume in the country, %)



THE MAIN SECTORS OF ECONOMY OF THE CITY⁵

(proportion of the sector in the total value added of the city, %)



Riga: World Heritage Status

Historic Centre of
Riga, UNESCO
World Heritage List
Site Nr.852, since
1997



United Nations
Educational, Scientific and
Cultural Organization



• **Historic Centre of Riga**
• inscribed on the World
• Heritage List in 1997

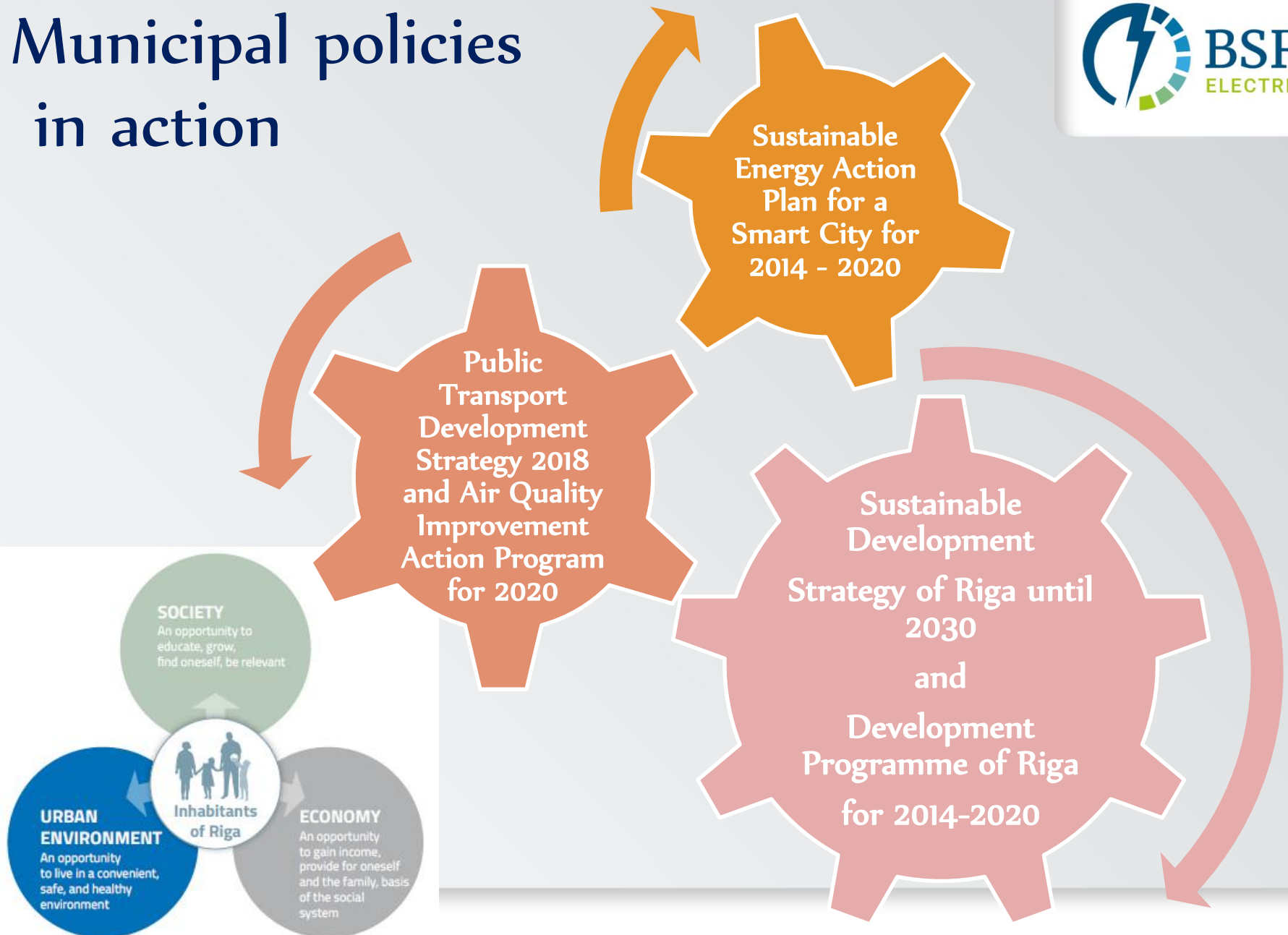
- Located in the Northern Europe: over 60% of the energy resources are used as heat energy; 6 000 buildings (12 million m²) need energy-efficient renovation
- 54% of public transport is provided by electric power driven vehicles while only 0.1% of private transport vehicles are e-cars
- The overall growth of the ICT sector in Latvia is remarkable: high maturity for introduction of new ICT-related technologies in public administration

Long term objectives



- Smart and resource-saving urban economy
- Sustainable housing and attractive urban environment
- Well-balanced and sustainable transport infrastructure and mobility

Municipal policies in action



Riga: Challenges Today



- Implementation of the «Riga Smart City Sustainable Energy Action Plan 2020» (SEAP)
- Planning: update of the SEAP/SECAP with a bold vision for 2030 and 2050
- Development & implementation of the measures for reducing the heat energy consumption in the administrative territory of the Riga city
- Sustainable mobility solutions to reduce further CO₂ emissions in the transport sector

Riga 1st Hospital experience E-scooters



Rigas 1.st. Hospital



- **Founded in year 1803. Specialized in planned social care.**
- **730** employees
- **240** doctors
- **285** bed places

- **Per year**
- **287 000** patients daily visits
- **135 000** diagnostics / researches
- **52 000** planned patients for longer care
- **12 000** planned operations per year

2 e – scooters for the hospital needs



STEP BY STEP

MAY, 2018. I pilot site research – detailed investigation of the technical needs of the hospital

MAY, 2018. Open meeting with market players and site visit to the hospital

JUNE, 2018. Price survey for technical assistance to develop the procurement documents

JULY, 2018. II pilot site research – identification of the e – scooter model

AUGUST, 2018. Launched public procurement

SEPTEMBER, 2018. Announced the result of public procurement

OCTOBER, 2018. Press conference about e – scooters

STATUS NOW: On – going 6 month testing of 2 e – scooters for Riga 1st Hospital needs.

Lessons learned



1. Average distance:

- 3 – 4 km per scooter/ 10 km/h
- 6 – 8 patients per day per scooter
- Charging once per 3 days per night (guards are responsible for the charging)

2. No technical problems

3. Usage

- The main hospital nurse gives an order use e – scooters
- 2 sanitary are in charge to use and transport patients.
- Technical instruction is given for new staff member, if he or she will be using scooter

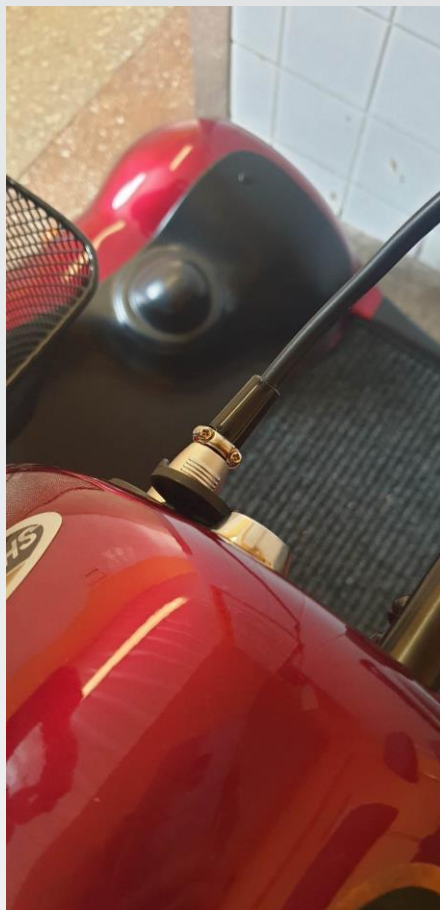
4. Patients

- Positive reviews from the patients
- Used to move patients between 4 departments of Heart Surgery Division

5. Hospital

- Additionally consider to use e – scooters for the household needs in the future

E-scooters



Thank you!



Riga Municipal Agency "Riga Energy Agency"

Timurs Safiuļins

Maza Jauniela street 5

Riga, LV-1050

Phone: +371 67012350

e-mail: rea@riga.lv